

DECEMBER 31, 2007

Original Charter Members

- Cypress Creek Estates
- Cypress Mills
- Cypresswood
- Enchanted Valley
- Enchanted Valley Estates
- Grantwood
- Kleinwood
- Lake Cypress Estates
- Lakewood Forest
- Lake Forest Utility District
- Lakewood Glen
- Longwood
- Norchester
- Ponderosa Forest
- Prestonwood Forest
- Ravensway / Saracen Park
- Timberlake Estates
- Tower Oak Bend
- Tower Oaks Plaza
- Timberlake ID

ANNUAL REVIEW AND REPORT TO STAKEHOLDERS

2007 Member Organizations

- Subdivisions represented through MUDs and HOAs (80+)
- Supporting Memberships (81)

Supporting Resolutions

Chambers of Commerce

- Cy-Fair Houston (700 members)
- Houston Northwest (750 members)
- North Houston Association

Collaboration in Sharing Mission Goals

- Bayou Preservation Association
- CCUCA
- Citizens' Environmental Coalition
- Houston Wilderness
- Katy Prairie Conservancy
- Quality of Life Coalition

Working Partnerships

- Assoc. of State Floodplain Mgrs.
- Harris County Flood Control District
- Harris County Precinct 3
- Harris County Precinct 4
- Harris County PID

www.cfcc.org



THE CYPRESS CREEK FLOOD CONTROL COALITION

...community organizations united for collaboration in regional government watershed management...

I n d e x

- Letter to Stakeholders and Watershed Residents
- Cover, 2006 Annual Report
- Historical Milestones. (1985 – 1986)
- Annual Report
- Financial Section
 - Funding Requirement & Sources 2008
 - Budget – 2008
 - Balance Sheet and Profit / Loss Report 2007
 - Graph Exhibits

Letter to the Stakeholders and Watershed Residents.

2007 finished with notable accomplishments and cautious optimism looking into the future. The mission goals agreed when our 1999 charter was crafted in the shadow of the 1998 and 1994 flooding continued to be the driving force for your Board of Directors in this 9th year of the Cypress Creek Flood Control Coalition (CCFCC) existence. The greatest accomplishment of which I am very pleased to report is the recognition given CCFCC by our elected politicians, top-level government officials and the private sector as the respected community voice in representing and obtaining their cooperation and assistance in the quest for our goals. Actions and events directly and / or indirectly influencing progress on achieving our charter goals include:

Drainage / Flood Damage Reduction:

- "Cause and effect" research essential for correcting significant flaws in FEMA computer modeling which has under calculated the Upper Cypress Creek Watershed floodplains was completed.
- Discussions over the last 2 years laying the groundwork for joint planning between CCFCC and HCFCD in 2008 concerning financing strategies for the master watershed plan were successfully concluded.
- The "Upper Langham Creek Frontier Program Feasibility Study" was completed by HCFCD thereby setting the stage as a possible prototype for our watershed.
- The Board was briefed by HCFCD on their Upper Cypress Creek Watershed flooding easements. (Total 5,227 acres acquired to date).
- Excavation of the Cypress Creek regional detention basin / nature preserve adjacent to the North Eldridge Parkway neared completion.

Legal:

- FEMA adopted the erroneous TSARP floodplains delineation (understated locations and depths) and is now in court faced with a federal judge denial of their motions to dismiss a lawsuit filed by the Sierra Club to stop such action. Although technical facts supporting the Sierra litigation includes data derived from CCFCC's research, we are not a party to the litigation.

Preservation / Reforestation

- The Cypress Creek Greenway Project continued to attract increased and wide spread community and local government interest as the foundation and cornerstones for CCFCC preservation undertakings.
- A \$95 million Harris County bond package for parks on the November ballot which includes funds critical to development within the Cypress Creek watershed was approved by voters.
- Eight (8) projects in their 12,500 square mile Gulf Coast Planning region received "**Best of the Best**" honor awards given by the Houston-Galveston Area Council in recognition for best practices and innovative approaches. Two of the 8 projects in this entire 13-county area are in the Cypress Creek Watershed / Cypress Creek Greenway Project corridor. Details are provided in this report.
- A mitigation initiative, 3-years in the making, encompassing wetlands in the Spring Creek and Cypress Creek watersheds was signed by the US Army Corps of Engineers and Legacy Land Trust.
- Houston passed a new ordinance requiring developers to share in park costs. (Will Harris County follow suit?).

continued next page

- TxDOT planted 30,705 trees at a cost of \$2.1 million in a reforestation project along Texas State Highway 249 -- a main traffic artery intersecting the Cypress Creek Watershed.

Engineering Research

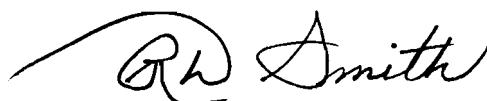
- Engineering research continues to be the backbone of CCFCC's flood mitigation program. Refer to the Financial Section of this report for details.
- Legislation was signed in June by Texas Gov. Rick Perry making Rice University home to Texas' first research center focused exclusively on predicting and planning for disasters caused by hurricanes and tropical storms. CCFCC also completed pre-contract reviews (including consultation with the Association of State Floodplain Managers) and issued a contract to the Center's Director, Dr. Phillip Bedient, the Herman Brown Professor of Engineering and one of the nation's foremost experts on urban flooding to manage a "No Adverse Impact" (NAI) research project encompassing the Cypress Creek Watershed.

Communications: The 2006 Annual Report contains considerable background information about the watershed and our Coalition's goals which provides a wealth of knowledge on these subjects. You are encouraged to read this 2007 Annual Report as an appendix to the 2006 Annual Report.

Preparation of monthly public service news articles and continued website upgrading was resumed and the work is now once again being done at no cost by members of your Board of Directors. We hope to contract for outside services in 2008.

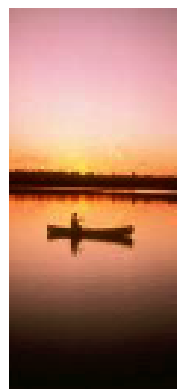
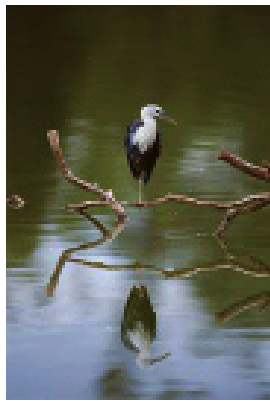
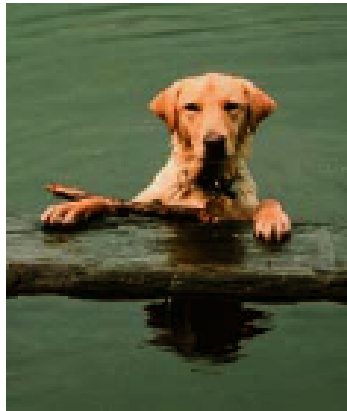
Plans for 2008:

- Continued collaboration with the Texas Department of Transportation (TxDOT), Harris County Flood Control District (HCFCD) and elected officials to identify, acquire and excavate land for major regional detention to service both transportation and urban development in the Upper Cypress Creek Watershed
- Complete action to correctly identify and regulate development in the Upper Cypress Creek Watershed based on the true base flood elevations.
- Re-institute research on the "Future Conditions Flood Hazard Boundary" computer simulation analysis.
- Seek government and private sector commitments to provide key property easements supporting the Cypress Creek Greenway Project development.
- Locate fund raising leadership and develop a broader base of membership participation.
- Continue participation in an advisory role concerning the following:
 - The Urban Stormwater Management Study
 - The Cypress Creek Watershed Stormwater Management Program
 - The Harris County Flood Control Task Force (appointment by Harris County Commissioners Court
 - Director appointments to the Board of Directors for the Bayou Preservation Association (BPA) and the Friends of Kickerillo Mischer Preserve.



Richard D. Smith, President
Cypress Creek Flood Control Coalition

Included for reference -



Cypress Creek Flood Control Coalition

2006 Annual Report

www.ccfcc.org

WHAT'S INSIDE...

- President's Letter
- Watershed Map
- Mission Statement
- Annual Report
- Financial Summary
- Board/Committee Info

Historical Milestones¹

1986 The U.S. Army Corps of Engineers (USACE) presented a plan covering channel construction between the mouth of Spring Creek and U.S. Highway 290 for protection against 10-year frequency floods. It included recreation and environmental mitigation plans. Right-of-way to accommodate the channel ranged from 150 to 350 feet wide. The initial cost estimate was \$125 million (1986 dollars). Congressman Bill Archer successfully got the project approved and funded in the Water Resources Act of 1988 (PL 100-676). Twelve years later, USACE reported that Harris County no longer supported the 1986 plan because they “desire a project which is less structural and more environmentally pleasing.” HCFCD said the plan was not implemented “due to concerns that a wider Cypress Creek would cause adverse flooding impacts on Spring Creek,” and that “as time went on, the federal economic justification could no longer be met.”

On November 18, 1986, the HCFCD Director submitted a letter to Commissioners Court advising that the TC&B master drainage plan was nearing completion and “has been performed in conformance with the criteria established by the District’s drainage policy for the Cypress Creek Watershed” and “will present a reasonable approach to stormwater management and will include a regional detention plan in conjunction with...”

The letter recommended and Commissioners Court approved a \$4,000 per acre contribution (impact fee) to be collected from developers in Cypress Creek watershed noting, “Adjustments to this amount may be necessary to take into fact inflation and actual project costs”... “The regional program for the Cypress Creek watershed will provide a drainage system utilizing all present facilities”... and “although the regional detention facilities will be large in size, [they will] have [the] potential to serve as recreational sites.”

1985 Floodplain mapping for FEMA adoption was officially approved in September and published in the FEMA Flood Insurance Study.

¹ Source: “Historical Milestones” , CCFCC website www.ccfcc.org

Annual Report Year Ending December 31, 2007

Although Harris County's 2007 rainfall of 65.5 inches was 36% above the annual average, notable flooding fortunately did not occur. This compares to 73,000 homes being flooded when only 6 more inches fell in 2001, the year Tropical Storm Allison pummeled the Gulf Coast. The challenges set forth in CCFCC's 1999 Charter were met during the year with enthusiasm, great energy, occasional frustration and a **lot of hard work** by your elected volunteer directors. The 2007 highlights and 2008 plans summarized below will be better understood if one reads this information as a continuation from the 2006 Annual Report (which is also available on request and is on our website).

Flood Damage Reduction: To better comprehend the dynamics of storm water flooding and what must be done for us to obtain effective flood damage reduction in the Cypress Creek watershed, it is fundamental we, the residents, understand that the storm water volume and drainage rate of flow moving in an easterly direction and down hill from the Upper Cypress Creek watershed to lower elevation communities is highly dependent on the lay of the land. Thus it is critical to the whole process of flood damage management throughout the watershed that these processes be accurately measured (and subsequently monitored for change). This information is basic in the creation of effective regulations governing land fill, new development drainage, wetlands preservation, storm water detention / controlled release rates and other factors which, if followed, will prevent and/or lessen the extent of out-of-bank stream flooding from becoming worse than it would if the land were left in its natural state.

If the base flood elevation (BFE) measurements and attendant floodplain mapping are in error, it will likely lead to erroneous assumptions in land development permits and/or design / construction of flood damage protection infrastructure. Taking this into account led to the Board's decision 5 years ago to undertake research - - - consistent with our Charter requirements - - - to verify the accuracy of this critical information.

CCFCC has just completed a very successful initiative to assure the soundness of the computer modeling of Cypress Creek that is relied on by Harris County. These models predict the behavior of the creek during rainfall conditions and provide the basis for actions

by the County in regard to creek flood mitigation, including for example new development permitting and construction of flood mitigation facilities.

When FEMA issued new flood plain maps for Cypress Creek based on modeling done after Hurricane Allison, CCFCC undertook what became a comprehensive technical review of the revised models. We identified a number of predicted creek behaviors that had significant deviation from historical factual data, in specific areas in the western part of the Cypress Creek Watershed. When we advised the Harris County Flood Control District of these findings, they acknowledged the need for further review, which kicked off a lengthy, collaborative study with CCFCC, wherein HCFCD undertook intensive engineering evaluations. The result was that HCFCD created, and adopted a revised model that now satisfactorily predicts creek behavior.

This remodeling effort now provides the basis for the reactivation of a research study that CCFCC had requested, and HCFCD undertook, earlier in the decade, to model what Cypress Creek behavior would be assuming the watershed were fully developed (called the "Future Conditions Flood Hazard Boundary Study)". This study had been put on hold understandably when the weaknesses in the model at that time were recognized; with the new model in hand, HCFCD is soon to reactivate that study and push it to completion.

There is a regulatory philosophy, for watersheds, that is referred to as 'No Adverse Impact'. Harris County endorses this philosophy. However, the execution of it unavoidably involves many uncertainties that strain the limits of conventional technology. An initiative is underway at Rice University, under Dr. Phil Bedient, to develop the technology and application methods needed to remove many of these uncertainties. We have sponsored an effort by Dr. Bedient and his students, to apply his new concepts to Cypress Creek, in order to establish with finer accuracy than ever before, what it takes in the way of flood mitigation facilities in order for new developments in Cypress Creek Watershed to truly have "no adverse impact". .

Preservation and Reforestation. In reporting on this top goal of the CCFCC alliance, it is appropriate to look back a few years in the watershed history. Our files contain a letter dated November 30, 1982 from the Harris County Parks Planning Department. Written to one of our future directors, it advises,

"The Cypress Creek Parks Project was initiated in 1976 by Judge Jon Lindsay's office. Since that time approximately 1800 acres have been acquired along Cypress and Spring Creeks. These sites will provide both outdoor recreation needs and provide a measure of flood control. When completed there should be an approximate total of 2,600 acres of land. We are still concentrating on acquisition rather than development because of the escalating cost of land. However, two sites have been developed. Elizabeth K. Meyer Park . . . and Jessie H. Jones . . . Both are located on the enclosed map."

For reasons unknown to CCFCC, this visionary quality-of-life project languished for several decades. Surely it was not an unintended victim of the Cypress Creek community's environmentally-based objections combined with the HCFCD decision to stop the U.S. Army Corps of Engineers plan for channel construction between the mouth of Spring Creek and U.S. Highway 290. In any event, Judge Jon Lindsay's historical vision was resurrected by the Cypress Creek Flood Control Coalition in the wrappings of their "Preservation Mission Statement" and the "Cypress Creek Greenway Project".

2007 witnessed a healthy and growing recognition by the land development community in the value of "green" development in addition to increased interest by municipal utility districts in park and trail development. A movement is clearly underway.

The Cypress Creek Greenway Project (CCGP) continues to be CCFCC's primary means to focus on its objective of preservation within the Cypress Creek watershed. The Greenway will create a continuous linear greenbelt along Cypress Creek stretching from west of US 290 to the east where it connects with the Spring Creek Greenway. The Greenway will connect a series of existing and future anchor parks and will include a multipurpose trail system along the entire length of the Greenway.

The Greenway as envisioned by CCFCC will constitute a significant element in the community goal to build a less flood-prone environment. Preserving floodway land and where needed the adjacent 5–10 year floodplain, it can serve as the multi-purpose riparian channel for floodwater conveyance along Cypress Creek and simultaneously provide recreational opportunities, preserve the existing natural habitat and be a way to develop awareness of the cultural and historical significance of Cypress Creek.

The CCGP advocates the development of the Greenway by encouraging a collaborative effort among numerous participants which include Precinct 3 and 4 Parks' Departments, HCFCD, land developers, MUD's, Hoe's, businesses, civic organizations, our elected officials and individuals. MUD's are a key player in developing the Greenway and we have met with 25 MUD boards to make them aware of the CCGP and to encourage their participation.

Several things have occurred during 2007, or are in progress, to move the CCGP effort forward. Among them are:

- A \$95 million Harris County bond issue for parks was approved by voters in November. Some of those funds may be made available for use on the Cypress Creek Greenway and to develop new anchor parks.
- A board of directors has been established for the Friends of the Kickerillo Mischer Preserve. This non-profit organization will work with Precinct 4 in planning for and developing the Kickerillo Mischer Preserve, a 100 acre wooded tract including a 40 acre lake along Cypress Creek at SH 249. V&W Partners, Ltd., a joint venture of Kickerillo and Mischer, will be transferring this acreage to Harris County later in 2008. V&W has funded the creation of a conceptual plan for the Preserve.
- The Friends of the Kickerillo Mischer Preserve received a 2007 Parks and Natural Area Regional "Best of the Best" Honor Award from the HGAC for the planning done by the community, developer and Precinct 4 Parks Department leading to the creation of this preserve.
- HCFCD purchased 12.5 acres along Cypress Creek for flood plain preservation. This acreage is adjacent to the 62 acre Coles Crossing Nature Preserve.
- The Timber Lane UD dedicated 4.5 miles of trails on two parcels along Cypress Creek in November. In addition, their residents approved a \$6.3 million bond issue in May for park and trail development, they received a \$3.25 million Transportation Improvement Program grant for building trails and a pedestrian bridge over Cypress Creek, and they received a \$100,000 grant from TPWD. Timber Lane certainly sets a high bar for others to follow.
- Timber Lane UD received 2007 Parks and Natural Areas Regional "Best of the Best" recognition from the HGAC for their outstanding contribution to the region and their master park plan.
- Harris County Precinct 4 Parks Department will soon begin construction of a multipurpose trail along Cypress Creek which will connect Meyer and Collins Parks.

Funds from a \$10,000 grant awarded to the Cypress Creek Flood Control Coalition by REI will be used for signage and benches along the connecting trail. In addition, Precinct 4 has plans to construct trails along Cypress Creek through both Meyer and Collins Parks.

- Excavation continues on the regional detention basin at Cypress Park site and should be completed later this year. HCFCD will be developing plans for its work following completion of the excavation and has \$1 million budgeted for this project.
- Bridgeland has completed approximately 1.5 miles of trails along Cypress Creek in the 900 acre corridor which they have set aside along Cypress Creek for preservation and recreation.
- Several MUD's within the Cypress Creek corridor have park and trail plans in progress and some of them have the potential for tying into the Cypress Creek Greenway.
- We continue to have interest in, and support for the Greenway from a variety of sources. Typical of this was an unsolicited \$150 contribution to the Cypress Creek Greenway Project from the Memorial NW Ladybugs Garden Club.

For additional information please visit www.ccfcc.org, or contact Jim Robertson, Chairman, Cypress Creek Greenway Project at 281-370-8243 or JHRVER@aol.com

Communications: Website upgrading, resumption of our monthly public service Look Upstream newsletter, creation of an internal volunteer Communications Program Committee and continued sponsorship of guest speakers at the Board's monthly meetings were the highlights of actions inherent in our Communications / Education mission goal.

The website continues to be a depository for a growing wealth of information concerning the CCFCC mission accomplishments, current events, historical reference material concerning flooding, land subsidence, preservation, membership and a rather voluminous glossary. As an example, the 1986 and 1985 "Historical Milestones" copied from this section of the website is provided in this Annual Report.

Plans for 2008: Plans for the future as described in the Cypress Creek Flood Control Coalition 2006 Annual Report will carry over into 2008 and beyond. It is an excellent reference document which we encourage all stakeholders to read for greater understanding

of the Cypress Creek Watershed evolving transition from rural country side to large scale urban development.

Upgrading of the Coalition's funding is of paramount importance in 2008 if the Coalition is to successfully achieve our goals of the community and local government partnership developing and implementing a solid flood mitigation plan within the watershed. Information on costs, funding contribution sources, budgets and the funding shortfall which must be addressed are provided in the Financial Information section.

Summary: There are ongoing challenges facing our elected politicians, top-level government officials and local non-profit organizations which represent the public. These challenges include the complete of the master watershed storm water management plans, the evaluation of possible tighter drainage regulations in this watershed taking into consideration characteristics which are unique from others, the obtaining of funds for and the construction of major regional detention basins in the Upper Watershed, and finding answers to deforestation and preservation matter affecting the riparian corridors throughout the major and tributary channels. These efforts will surely require the deep and respectful cooperation of the above named groups.

Annual Report 2007

Financial Information 2007 Annual Report

Summary: The main driving forces affecting the 2007 budget plan were:

Budgeted Activities.

- The schedule of activities used in the 2007 planning was considerably over-optimistic resulting in a major reduction in planned expenses across the board. For example, planned research to model where out-of-bank flooding will spread and how deep remained "on hold" because recalibration of the FEMA TSARP computers was prolonged; hence were not useable for this research.
- Activities to be funded partially or in total by the REI endowment are dependent on their program planning as it relates to the Cypress Creek Greenway Project. This has also shifted forward into 2008.
- A new "Communications Program Committee" created in 2007 has absorbed work which was budgeted to outside service providers but is now being done by unpaid volunteer in-house workers.
- The enclosed "**Funding Requirement and Sources – 2008**" schedule is provided to support the 2008 budget. Please note this budget will reduce retained earnings to an extremely slim \$5,000 at the end of the year. Financial intelligence / recommendations from other colleague non-profits are that a 1-year contingency fund should be maintained annually..

Funding Requirements.

CCFCC has not requested voluntary MUD and/or HOA member organization donations for several years; relying solely on the (1) limited 50-cent monthly contributions and (2) retained earnings from prior years. Please refer to the bar chart in this section for detail (including the projected \$28,000 shortfall in 2008 if no action is taken).

continued on next page.....

Although the progress was slower than hoped, the success in resolving the Upper Watershed BFE / floodplain mapping will now free the way forward to resuming the research projects described elsewhere in this report. Consequently we are asking all member organizations to give careful consideration to a request to be forthcoming shortly to participate in the 50-cent voluntary donation on monthly water bills. If you are an HOA / POA / CIA member, please contact any CCFCC director to arrange for a presentation to your Municipal Utility District if desired for this purpose.

**Funding Requirements and Sources
2008**

REQUIREMENTS

| <u>Engineering Research</u> | <u>(\$ 000's)</u> |
|--|-------------------|
| • Complete evaluation of remapping floodplains / floodway and Upper watershed "overflow" into Addicks watershed | \$ 5 |
| • Complete the "No Adverse Impact" analysis (Rice University students. | \$10 |
| • Resume and complete "Future Conditions Flood Hazard Boundary" computer simulation modeling with HCFCD Planning Dept. | \$35 |
| • Drainage / Regional detention basins in Upper Cypress Creek Watershed to account for NW US 290 – Hempstead corridor project, Grand Parkway, and other Upper Cypress Creek watershed issues including Waller County | <u>\$ 10</u> |
| o Sub Total Engineering | \$60 |
| <u>Cypress Creek Greenway</u> | |
| • REI directed work | \$ 10 |
| • Other project costs | <u>\$ 1</u> |
| o Sub total Cypress Creek Greenway | \$13 |
| <u>Other Expense</u> | |
| • Insurance, bookkeeping, website and internet | \$ 5 |
| • Grant applications | \$ 1 |
| • All other | \$ 8 |
| • Contingency | <u>\$ 5</u> |
| o Sub total "Other" | <u>\$ 19</u> |
| TOTAL REQUIRED FUNDS | \$ 92 |

BUDGETED INCOME AMOUNTS / SOURCES

| | |
|---|--------------------------------|
| • Retained funds carry-over from 2007 | |
| o REI ¹ | \$ 9 |
| o Houston Endowment Inc ² | \$ 8 |
| o Unrestricted CCFCC voluntary contrib. | <u>\$27</u> |
| o Total retained funds | \$44 |
| • Estimated from current 50-cent per month Resident contributions | <u>\$20</u> |
| SUB-TOTAL | <u>\$64</u> |
| SHORTAGE | (\$ 28)³ |

2008 Funding Reqmts and Sources

¹ The REI funds must be spent on the Cypress Creek Greenway Project according to their designated requirements..

² These are grant funds required to be spent on the "Future Conditions Flood Hazard Boundary" research.

³ This shortfall in funds will require additional membership contributions and/or grant awards.

Cypress Creek Flood Control Coalition
Operating Fund -Budget
January through December 2008

| | Jan - Dec 08 |
|--|---------------------|
| Ordinary Income/Expense | |
| Income | |
| 1 - 1.1 · Fund carry-over Previous Year | |
| a · Encumbered - Houston Edowment | 8,100.00 |
| b · Encumbered Funds - REI | 9,333.00 |
| c · Retained Earnings | 26,600.00 |
| Total 1 - 1.1 · Fund carry-over Previous Year | 44,033.00 |
| 1 - 2 · Membership Contributions | 22,000.00 |
| 1 - 3 · Other - (Grant Applications) | 5,000.00 |
| 1 - 4 · Resident Voluntary Contribution | 20,000.00 |
| 1 - 5 · Interest Earnings | 967.00 |
| Total Income | 92,000.00 |
| Expense | |
| 1 · Membership Business&Comm.Outrea | 600.00 |
| 2 · Annual Meeting | 500.00 |
| 3 · Preservation Committee | 200.00 |
| 4 · IT Mgmt-Evaluation Comm. | 200.00 |
| 5 · AWBD Committee | 0.00 |
| 6 · Legal & Accounting Fees | 0.00 |
| 7 · Administration Expense | 2,000.00 |
| 8 · Fed Income Tax Preparation | 200.00 |
| 9 · Fax Line | 300.00 |
| 10 · Office Supplies, Print, Postage | 1,000.00 |
| 11 · Internet & Email Expense | 1,500.00 |
| 12 · D&O L Liability Insurance | 1,800.00 |
| 13 · Contributions & Membership Dues | 600.00 |
| 14 · Houston-Galveston Area Council | 0.00 |
| 15 · Publications | 100.00 |
| 16 · Environmental Affairs Committee | 1,500.00 |
| 17 · Seminar / Conference Expense | 500.00 |
| 18 · Engineering/Technical Consultin | 60,000.00 |
| 19 · Reserve for Future Requirements | 0.00 |
| 20 · Grant Proposal Expense | 500.00 |
| 21 · Operator Fee - Customer Billing | 0.00 |
| 22 · Bookkeeping | 3,000.00 |
| 23 · Cypress Creek Greenway Project | |
| 23a · Meyer Park / REI | 9,300.00 |
| 23b · All Others | 3,000.00 |
| Total 23 · Cypress Creek Greenway Project | 12,300.00 |
| 24 · Detention Pond Committee | 200.00 |
| 25 · Contingencies | 5,000.00 |
| 26 · Misc Office Equipment | 0.00 |
| Total Expense | 92,000.00 |
| Net Ordinary Income | 0.00 |
| Net Income | 0.00 |

Cypress Creek Flood Control Coalition

Profit & Loss

January through December 2007

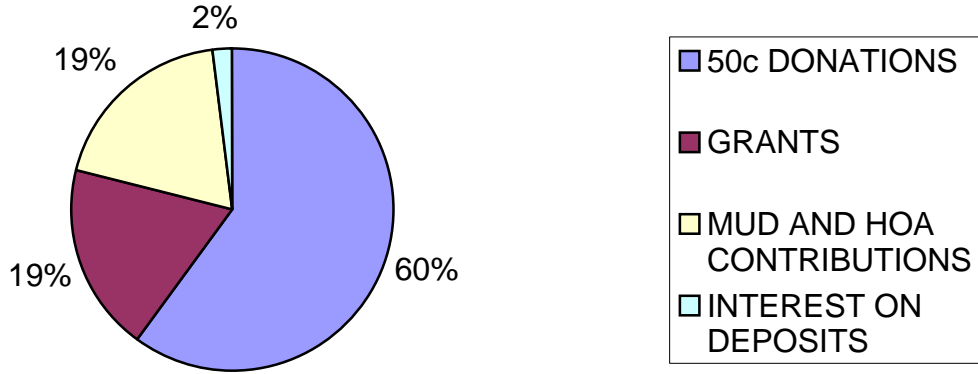
| | <u>Jan - Dec 07</u> |
|--|--------------------------|
| Ordinary Income/Expense | |
| Income | |
| 1 - 4 · Resident Voluntary Contribution | 20,098.56 |
| 1 - 5 · Interest Earnings | 2,284.40 |
| Total Income | <u>22,382.96</u> |
| Expense | |
| 1 · Membership Business&Comm.Outrea | 2,393.90 |
| 5 · AWBD Committee | 2,173.38 |
| 6 · Legal & Accounting Fees | 120.00 |
| 7 · Administration Expense | 1,486.44 |
| 9 · Fax Line | 350.66 |
| 10 · Office Supplies, Print, Postage | 825.17 |
| 11 · Internet & Email Expense | 1,409.07 |
| 12 · D&O L Liability Insurance | 1,773.57 |
| 13 · Contributions & Membership Dues | 250.00 |
| 15 · Publications | 61.83 |
| 17 · Seminar / Conference Expense | 240.00 |
| 18 · Engineering/Technical Consultin | 24,990.00 |
| 22 · Bookkeeping | 3,000.00 |
| 23 · Cypress Creek Greenway Project | |
| 23a · Meyer Park / REI | 322.82 |
| 23b · All Others | 2,027.42 |
| Total 23 · Cypress Creek Greenway Project | <u>2,350.24</u> |
| Total Expense | <u>41,424.26</u> |
| Net Ordinary Income | <u>-19,041.30</u> |
| Net Income | <u><u>-19,041.30</u></u> |

Cypress Creek Flood Control Coalition
Balance Sheet
As of December 31, 2007

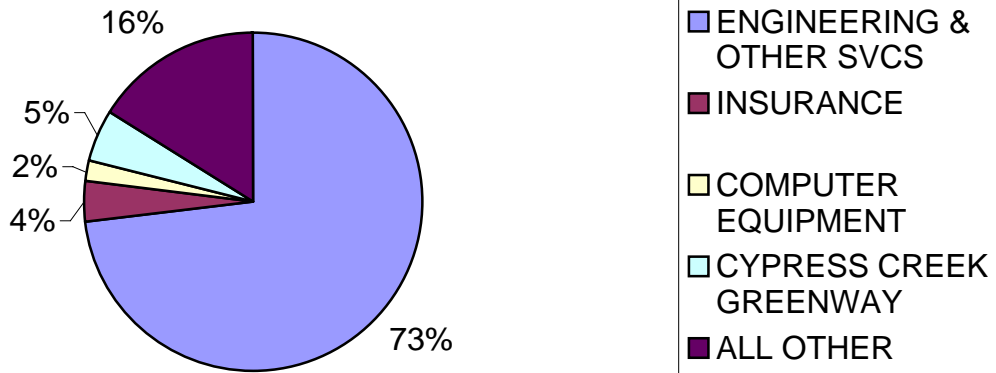
| | Dec 31, 07 |
|--|-------------------|
| ASSETS | |
| Current Assets | |
| Checking/Savings | |
| 1.1110 · Checking - Amegy Bank 3655083 | 5,281.31 |
| 1.1130 · Investments - Amegy | 40,296.96 |
| Total Checking/Savings | 45,578.27 |
| Other Current Assets | |
| 1.1163 · Prepaid - Other | 423.75 |
| Total Other Current Assets | 423.75 |
| Total Current Assets | 46,002.02 |
| Fixed Assets | |
| 1.1300 · Computer & Office Equipment | 1,301.95 |
| Total Fixed Assets | 1,301.95 |
| TOTAL ASSETS | 47,303.97 |
| LIABILITIES & EQUITY | |
| Equity | |
| 3000 · Opening Bal Equity | 24,870.64 |
| 3900 · Retained Earnings | 41,474.63 |
| Net Income | -19,041.30 |
| Total Equity | 47,303.97 |
| TOTAL LIABILITIES & EQUITY | 47,303.97 |

**FUNDS RECEIVED/SPENT
5 YEAR PERIOD
2003-2007**

FUNDS RECEIVED

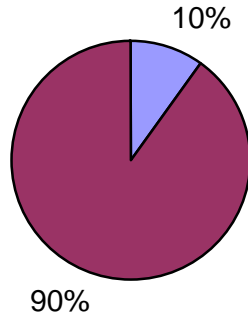


FUNDS SPENT



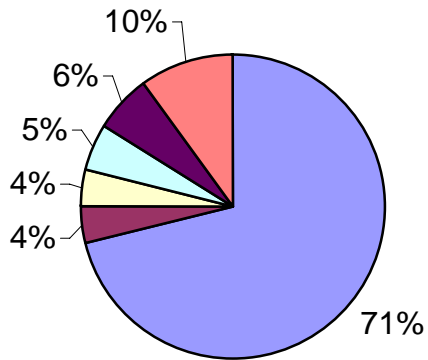
**FUNDS RECEIVED/SPENT
YEAR ENDING DEC 31, 2007**

FUNDS RECEIVED



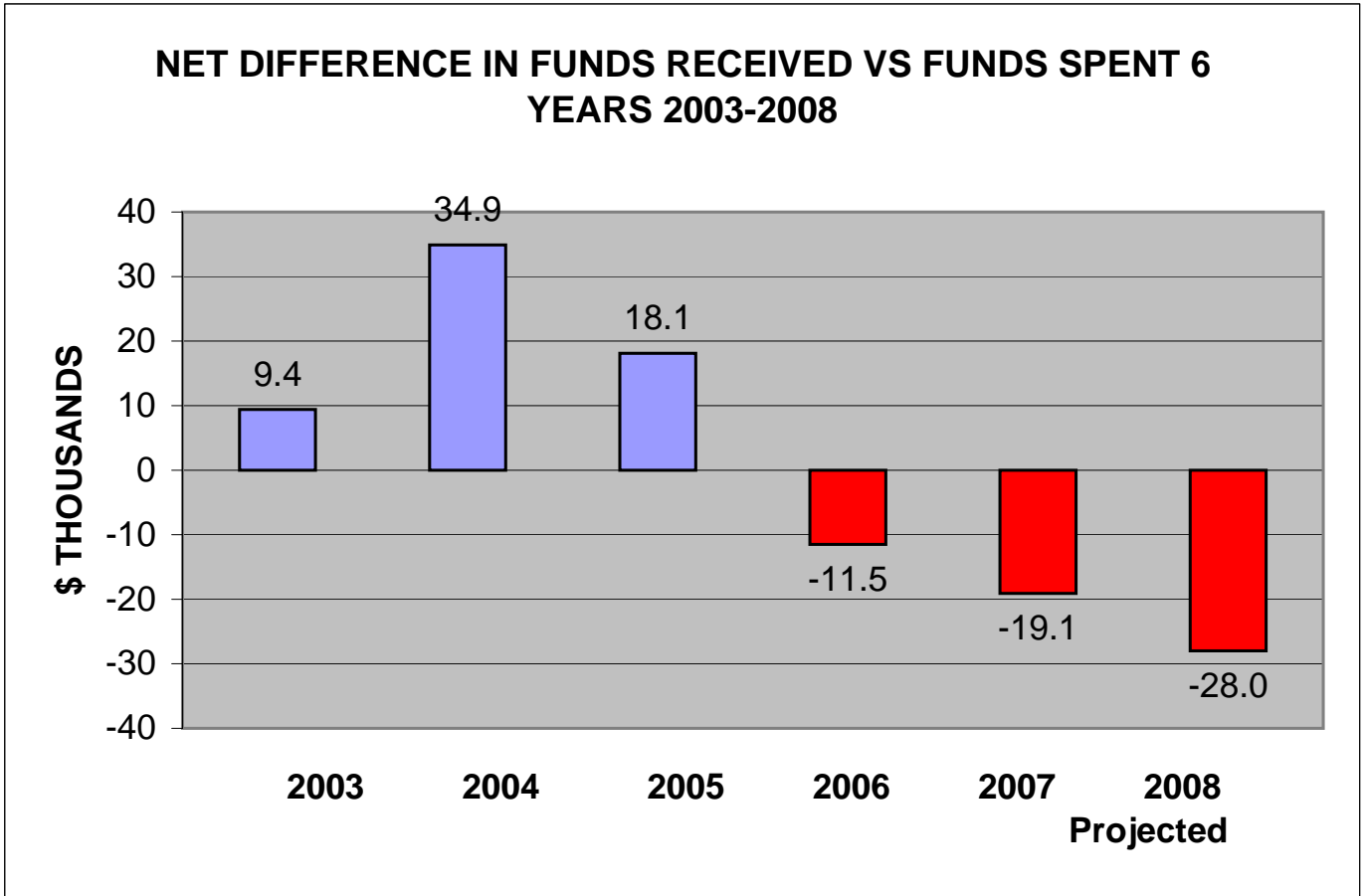
■ INTEREST ON DEPOSITS ■ 50c DONATIONS

FUNDS SPENT



■ ENGINEERING & OTHER SVCS
■ INSURANCE
■ COMPUTER EQUIPMENT
■ AWBD CONFERENCE
■ CYPRESS CREEK GREENWAY
■ ALL OTHER

**NET DIFFERENCE IN FUNDS RECEIVED VS FUNDS SPENT
6 YEARS 2003-2008**



**NOTES: 2008 SHORTFALL = \$68,000 OF WHICH \$40,000 WILL BE COVERED BY
2007 RETAINED EARNINGS**