

STORM WATER INLET MARKING (SWIM) PROGRAM





Storm Water Quality

- Preserving our environment is important to our health and survival.
- We've become more aware of effects of environmental practices like
 - the destruction of the rainforest, or
 - the release of hazardous chemicals to the atmosphere.





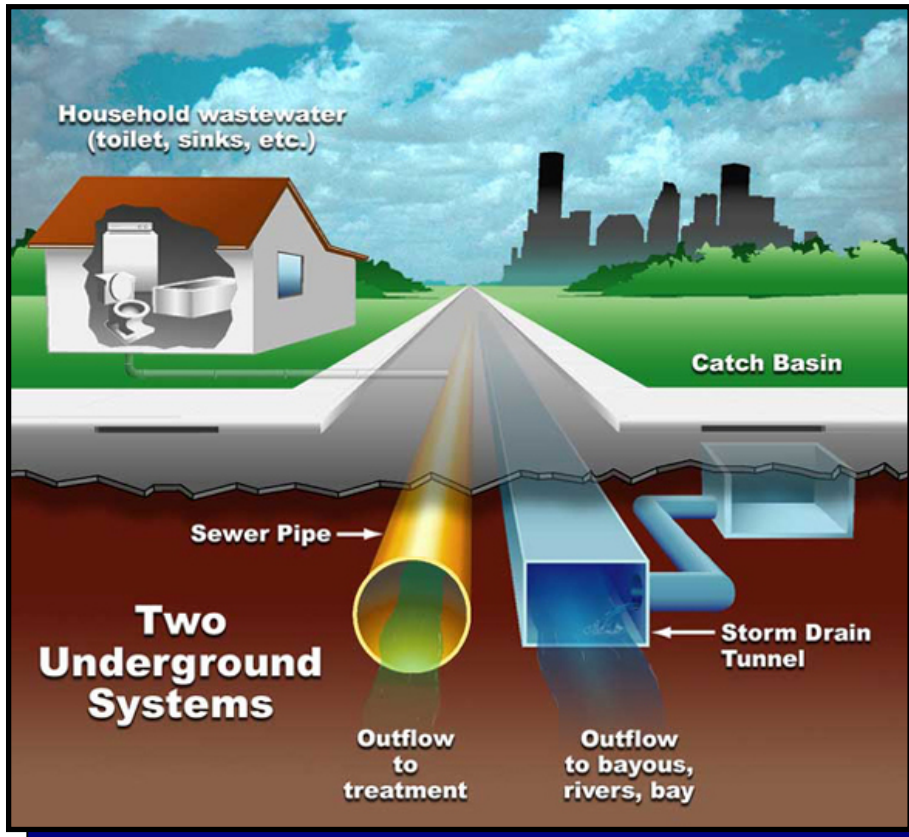
Start in Our Own Backyards

- Storm water runoff from urban areas can carry pollution generated by:
 - Littering,
 - Construction activity
 - Use of pesticides/fertilizers,
 - Illegal dumping or discharges,
 - Improper disposal of used oil and toxics, and
 - New development and redevelopment.





Sewage Treatment



Water that flows down the drains in our homes goes to sewage treatment facilities and then to bayous and rivers.

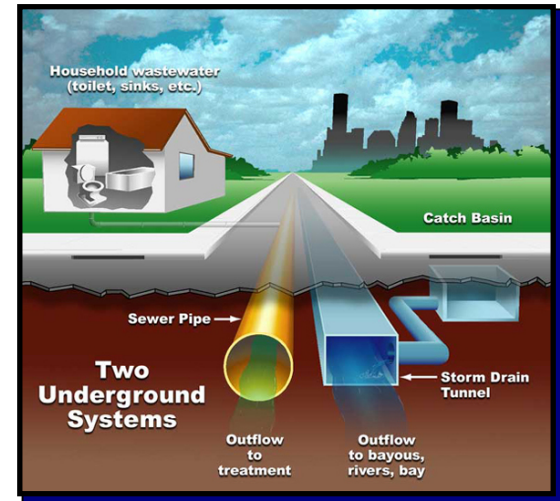




Storm Water Drainage

Water that flows into our storm water drainage system goes directly into our bayous, rivers, and ultimately, into Galveston Bay.

Storm water receives no treatment.





SWIM PROGRAM

- An environmental public education program
- To involve communities in reducing non-point source (NPS) pollution.





SWIM PROGRAM

- Working together to solve a common problem:
 - Government,
 - Volunteer groups, and
 - Businesses.





SWIM Program Goals

- Raise awareness in Harris County communities about storm water quality issues,
- Connect residents to their neighborhood storm drains and local waterways, and
- Encourage citizens to protect their water resources



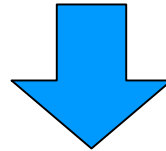


SWIM STORM DRAIN MARKER DESIGN

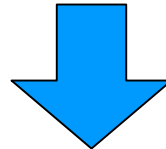




Awareness



Action



Environmental Stewardship





SWIM PROGRAM

SAFETY PROCEDURES and TIPS FOR STORM WATER INLET MARKING TEAM LEADERS





REMEMBER: SAFETY FIRST!

- Before you start:
 - Prior to marking, sign and return ALL waivers
 - Orally review these safety procedures with your volunteer groups.





Use the Buddy System



- Marking is a group activity, requiring a minimum of two people.
- There should NEVER be any marking done alone.
- At least 2 people should wear safety vests.





Traffic Management



- Traffic cones are used to alert vehicular traffic.
- Please designate persons to wave safety flags in case of street traffic.





Keeping Clean - -

- Wear clothing you do not mind getting dirty.
- Bring paper towels or a rag to wipe up.





Report Dumping

- If you see an indication
 - Of oil, paint, or any other potentially hazardous substances
 - At any storm drain
- Note the occurrence and report it to the SWIM Team Leader for your project.

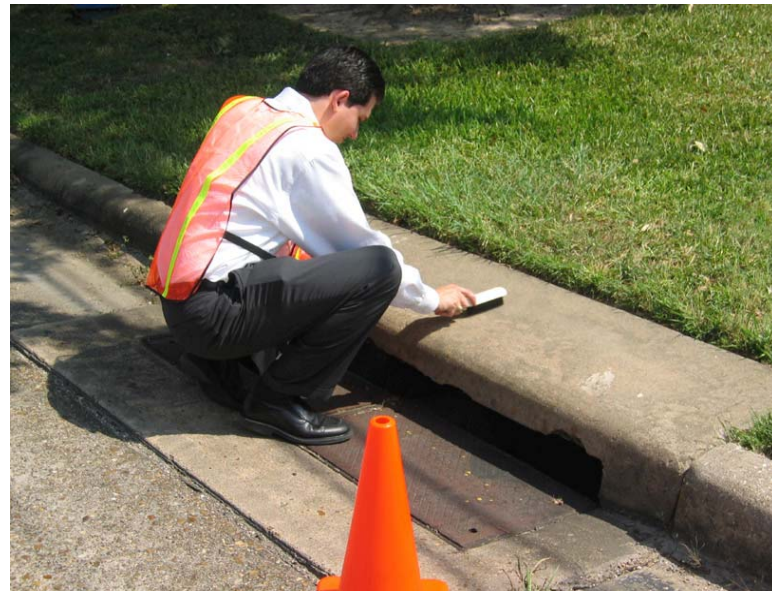




1. Clean Storm Drain Surface

Make sure the storm drain surface is:

- Flat,
- Dry, and
- Free of any loose debris.





2. Apply Adhesive

- Coming in 1/8" from the outside edge of the marker:
 - Apply a bead of adhesive, and
 - Then work in to the center.

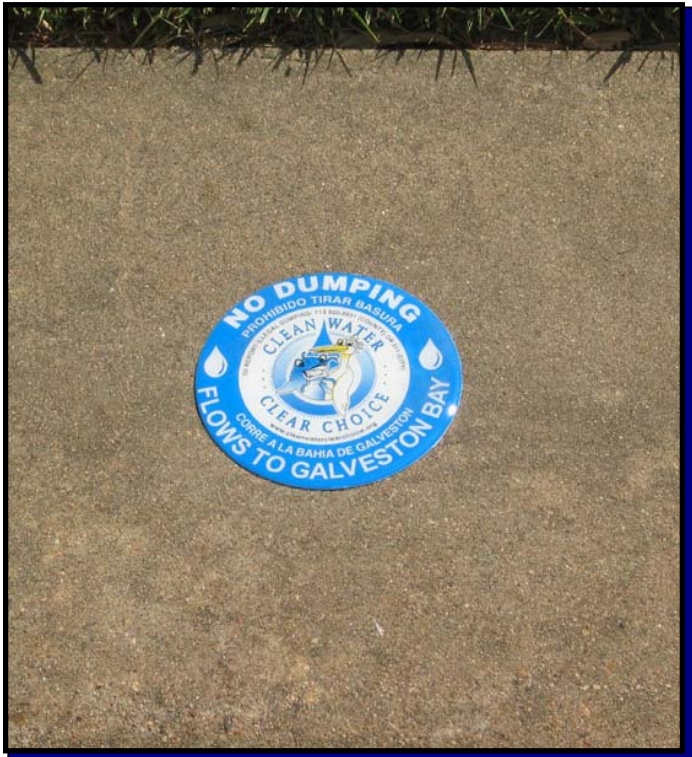




3. Stick It!

Apply the marker to the storm drain surface, pushing down **HARD**, forcing adhesive out around the entire edge.





It is important that the entire edge of the marker is **SEALED** to the application surface.





Finished Installation



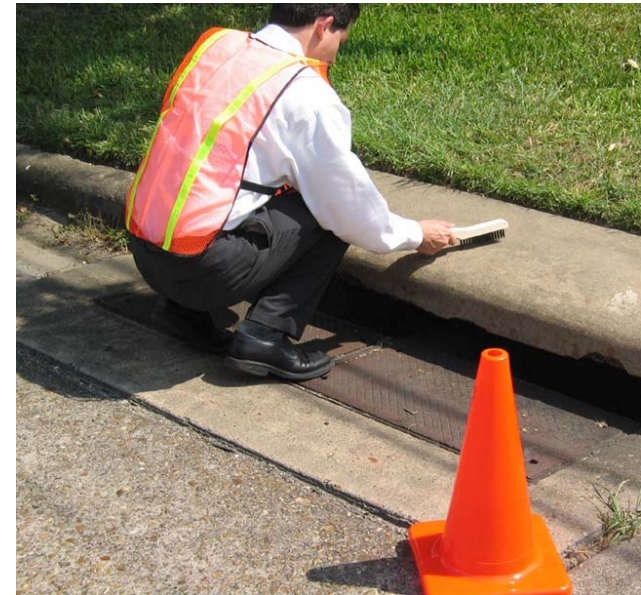
- Once installed, the curb markers stay affixed.
- They maintain their attractive appearance for years.





Please return safety vests, cones and brushes to:

Harris County
Storm Water Quality Section
9800 Northwest Freeway,
Suite 305
Houston, Texas 77092





Any Questions?

For more information:

- **(713) 290 - 3000**
or
- **www.cleanwaterclearchoice.org**





www.cleanwaterclearchoice.org



JTF
STORM WATER
MANAGEMENT
JOINT TASK FORCE

